

Consultant

Project

CALIFORNIA JAZZ CONSERVATORY

2040 ADDISON ST.
 BERKELEY, CA 94703

Issues

PROGRESS SET

REVISIONS

Sheet Name

FLOOR PLAN

Architect's Project No. 1503

Phase SD

Date JULY 29, 2015

Drawn by CC, SM

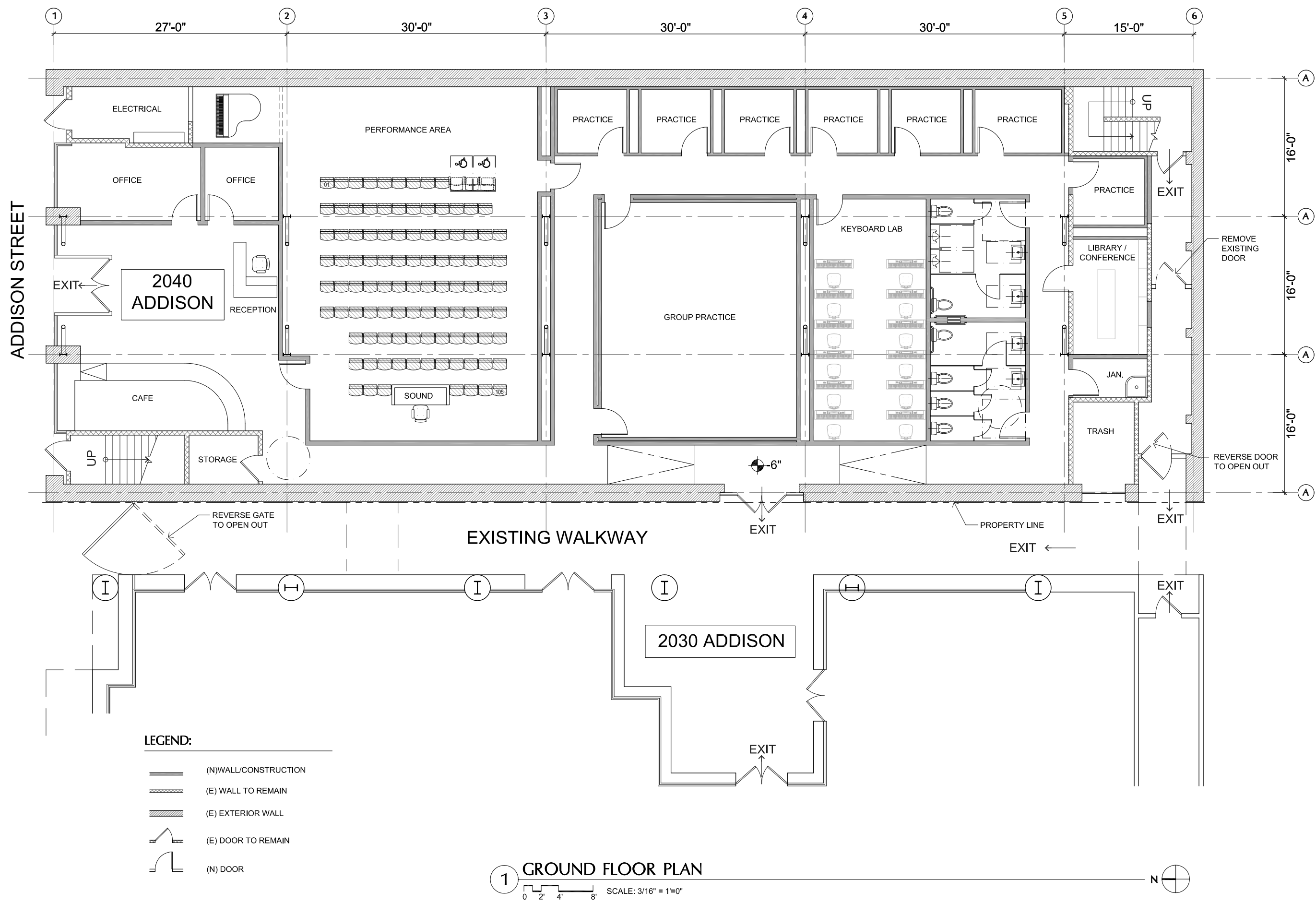
Checked by

Sheet No.

A1.0

Scale at Original Size - 22"x34" As indicated

NOT FOR CONSTRUCTION



N:\JOBS\1503 Jazz Conservatory\DRAWINGS\DWG\1503_A1.0_Floor Plan.dwg, 7/29/2015 4:24:33 PM
 Copyright 2013 - Marcy Wong Donn Logan Architects - All Rights Reserved - These Plans and/or Specifications are intended for the sole benefit of the clients of Marcy Wong Donn Logan Architects and may not be used, reused, copied, or reproduced in any form without the express written consent of Marcy Wong Donn Logan Architects.